

# Ecclesia

MARCH 2023





# IN THIS ISSUE



## THE HIGHLIGHTS

### On the Covers

*Front:* Shrove Tuesday Pancake Dinner

*Back:* Acolyte & guest preacher Rev. Kendra Joyner Miller

### Page 5

FUMC is now a Lighthouse congregation

### Page 13

Egg My Yard fundraiser benefitting Camp Discovery

### Page 17

UMC membership vows - our Lenten Sermon Series & Lent in a Box resources follow 5 of the commitments United Methodists make when we join the church

## CONTACT INFORMATION

The Rev. Dr. Mark Conforti, *Pastor*  
mark@fumcsalisbury.org | x.103

Becca Blackmon, *Administrator*  
becca@fumcsalisbury.org | x.102

Aaron Cameron, *A/V Production*  
aaron@fumcsalisbury.org | x.101

Mike Fansler, *Building Superintendent*  
mike@fumcsalisbury.org | x.119

Jen Fogt, *Youth Ministry*  
jen@fumcsalisbury.org | x.107

Joshua Starnes, *Music Ministry*  
josh@fumcsalisbury.org | x.106

Bailee Weisensel, *Children's Ministry*  
bailee@fumcsalisbury.org | x.108

Scotty Adcock, *Afterschool Childcare & Summer Day Camp Program*  
afterschool@fumcsalisbury.org | x.116

Kelly Austin, *Preschool*  
kellyhaustin@gmail.com | x.115

Courtney Bost, *Child Development Center*  
cdc@fumcsalisbury.org | x.110

The Rev. Garry Cook, MDiv, LCSW, *Pastoral Counselor*  
*FUMC Counseling Center (Sanctuary Counseling Group)*  
gdcook@triad.rr.com | 980.296.0991



Website

www.fumcsalisbury.org



YouTube Channel  
FUMC Salisbury



Sermon Podcast  
*Salisbury Sermons*  
on Anchor; Apple Podcasts;  
Google Podcasts;  
Pocket Casts;  
RadioPublic; and Spotify



Facebook  
@fumcsalisbury  
Instagram  
@fumcsalisbury



704.636.3121 | 217 South Church Street Salisbury, NC 28144



## Re:Marks

The hit film, “Elvis,” is the latest in a string of large-scale biopics about famous musicians. A chance visit to Graceland in 1996 converted me to becoming an Elvis Presley fan. Naturally, I was excited to watch this movie! And, it did not disappoint. Several scenes artistically narrated Elvis’ life, including the way Delta blues music fused with Gospel music to ignite his soul. This, of course, is what uniquely inspired Elvis Presley’s performances. The movie, “Elvis,” also dealt deftly with another person, Colonel Tom Parker.

“The Colonel,” as he was known, infamously snatched Elvis from relative obscurity and managed his career into super stardom. Through the years, reports of him loom large: pocketing an enormous chunk of Elvis’s earnings, insisting on movie deals & stage shows for the sake of paying off a gambling debt, and even rumors of propping up Elvis with medications. This has haunted Elvis’ legacy, leaving fans wondering what could have been. After all, Colonel Tom Parker was a carnival huckster.

The movie describes, from The Colonel’s perspective, the psychology of an audience watching a 1950’s traveling carnival show: to give a feeling that people know it is wrong, but they cannot help but enjoy it.

This is a fascinating concept! As I think about all kinds of entertainment – TV shows, movies, music, and more – this describes well what’s happening. A suggestive innuendo is made. The audience’s imagination is captivated. The inner dialogue of appropriateness takes place, maybe leading the audience member to want more or maybe shutting down the experiment.

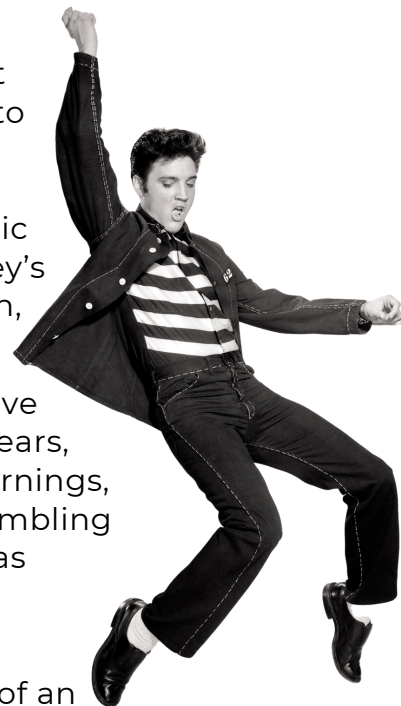
Did “The Colonel” of all people help us understand temptation? If so, then this is a fresh perspective on the alluring aspect to the choices we make. For example, as we watch another TV crime drama, one that involves violence and gore, we can note to ourselves: “a feeling is springing up inside of me that does not seem right.” Recognizing entertainment’s savvy way of packaging content, we should not be surprised. When we enjoy what we see, instead of shaming ourselves, we can recognize what’s happening. And still, we can make a good choice. Over the years, my wife and I have stopped watching some TV shows because, quite frankly, torturing another person does not pass for entertainment. We have more important things to do with our lives. Nonetheless, the psychology of an audience member watching a person get tortured goes like this: “Oh no! That’s horrible. I’m glad that’s not me. I’m safe in my home. I’ll keep watching because watching someone else suffer makes me feel better about myself.” As Elvis sang in “Suspicious Minds,” we’re caught in a trap!

And it’s not just entertainment. The inner dialogue (“I know this feeling is wrong, but I cannot help but enjoy it”) happens in other areas of our life: when we hear gossip, or when we get away with unseemly behavior and nobody notices, when we neglect to do the right thing...

During Lent, God calls us to come face-to-face with the inner dialogue of our spirit. Can we honestly look at ourselves, listen to what’s happening inside of us, and then act faithfully? We can’t build our dreams on suspicious minds!

Lenten blessings,

*Mark Conforti*



*Lent*   
at FUMC



# Lent & Easter

## at FUMC



### THIS YEAR DURING LENT

A Lenten sermon series on UMC Membership Vows

Lent at Home kits available

Egg My Yard egg hunts

Easter flower sales

### HOLY WEEK APRIL 2 - 8

#### Palm Sunday

Services begin in the Columbarium

April 2 | 8:30 & 11:00am

#### Lenten Prayer Stations

April 5

Following Community Meal at 6:00pm

#### Maundy Thursday

Service of Confession, Foot-Washing,  
Holy Communion, and Stripping of the Church

April 6 | 6:00pm

#### Good Friday

Service of Passion Readings & Music

April 7 | 12 Noon

#### Easter Day

Festival Worship

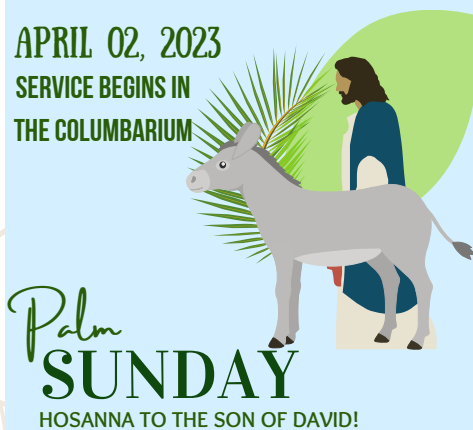
April 9

Sunrise at Bell Tower Green Park | 7:00am

In the Sanctuary | 8:30 & 11:00am

APRIL 02, 2023

SERVICE BEGINS IN  
THE COLUMBARIUM



Easter Day  
April 9, 2023

*Alleluia!*



*Christ is Risen!*



# Becoming a Lighthouse Congregation

**LIGHTHOUSE**  
C o n g r e g a t i o n



By affirmation of the Church Council, First United Methodist Church of Salisbury is now a "Lighthouse Congregation." Simply put -- we will purposefully welcome people who have been displaced because their United Methodist congregation has chosen to disaffiliate or close. This is why you will start seeing the Lighthouse Congregation logo (see below) on church print materials & social media.

This is not about poaching other churches for members! Rather, this is about humbly recognizing the pain that our sister congregations have experienced. The minority voices in disaffiliating congregations are left hurt, often times pledging that they never want to experience that kind of anguish again. Since our church is dedicated to staying with the continuing United Methodist Church, we will surely welcome everyone searching for a "haven of peace and grace," as our Western North Carolina Conference leadership lovingly phrases it. More information at <https://www.wnccumc.org/lighthouse-congregations>.

## Stay in Contact through Email & Text

### KEEP IN TOUCH!

#### EMAIL COMMUNICATIONS

##### SIGN UP FOR UPDATES!

Get news from First United Methodist Church-Salisbury in your inbox.

\* Email

First Name

Last Name

By submitting this form, you are consenting to receive marketing emails from: First United Methodist Church-Salisbury, 217 S. Church Street, Salisbury, NC, 28144, US, <http://www.fumcsalisbury.org>. You can revoke your consent to receive emails at any time by using the SafeUnsubscribe® link, found at the bottom of every email. [Emails are serviced by Constant Contact](#).

Sign up!



#### TEXT COMMUNICATIONS

Welcome to "FUMCinfo," the texting and voicemail service for First United Methodist Church of Salisbury.

Phone Number

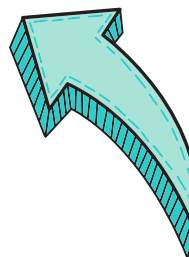
First Name

Last Name

Join Now

Msg&data rates may apply. To unsubscribe, text **STOP** to 313131 (393939 in Ca). For help text **HELP** anytime. Available in USA & Canada. Up to 5 msg/mo. Your info is always protected and your information will not be shared.

Powered by Ez Texting



**Sign up at**  
**[fumcsalisbury.org/fumcinfo](http://fumcsalisbury.org/fumcinfo)**



# Season of the Church Year: Lent

## What is Lent and why is it important?

Lent is an ancient and austere season marked by the spiritual disciplines of self-examination and repentance, prayer and fasting, self-denial and almsgiving, and reading and meditating upon God's Holy Word. This season commemorates the 40 days Jesus spent fasting in the desert and enduring temptation by Satan, before beginning His public ministry. Purple, like black, is a penitential color, in contrast to a festive one. The forty days of the Lenten fast (which begins on Ash Wednesday and ends on Holy Saturday), uses this deep, rich color which has come to represent somberness and solemnity, penitence and prayer. Because Sundays are "The Lord's Day of Resurrection," they are not counted as part of the 40 days of the Lenten fast, and are instead considered "little Easters." (This is why Sundays are counted "in Lent," and not "of Lent.")

Violet or purple was a very cherished and expensive color in the world Jesus lived. The dye used to make the color was painstakingly acquired by massaging the neck of a Mediterranean shellfish that secreted a special fluid. It was therefore afforded only by the wealthy and worn most exclusively by the royalty. Jesus, the king of the Jews, wore a purple robe only once. As the soldiers mocked and tormented Him, the Scriptures record they placed on Him a "purple garment" in order to ridicule Him and belittle the claim that He was a monarch.

Therefore, purple is used during this penitential season of Lent as a vivid reminder of the contempt and scorn Jesus endured, and the subsequent sacrifice He made for the atonement of our sin and eternal salvation. Ecclesiastical purple should remind all Christians of our daily need to humbly give attention to leading a life of confession and repentance.

During Lent, it is a custom to remove flowers and embellished decorations from the sanctuary and to veil crosses and other religious symbols in violet fabrics in solemn observance. This ancient tradition of "shielding the altar" (reminiscent of the veil that separated the "Holy of Holies" in the temple) from view until being reconciled to God after the Passover, at Easter. You'll notice that our altar credence retable is covered with burlap and vases of reeds and black sand, reminding us of Jesus's 40 days of fasting in the desert wilderness and our continual call to "repent in dust and ashes" (Job 42:6). Additionally, we embrace the somber tone of the season by omitting festive processions with the acolytes, instead, we fix our eyes upon the cross and are reminded of Christ's call to all His disciples to daily bear our crosses for His glory.

Our "hymn of the season" is the refrain from the beloved 2000 Steve Merkel classic and made popular by Michael W. Smith, "Lord, Have Mercy." The ancient words of this refrain are scriptural (cf. Matthew 15:22; 17:15; 20:30; Luke 18:9-14,) and can be found throughout countless Psalms too (6:2; 9:13; 31:9; 86:3; 123:3)! It is a simple prayer from the Greek: "*Kyrie, eleison; Christe, eleison; Kyrie, eleison!*" ("Lord, have mercy; Christ have mercy; Lord, have mercy on me!") This prayer is especially appropriate during the Lenten season, as by God's Law we are confronted with and see our sin, and in the Gospel we see our Savior!

Our Lenten Banner in the Sanctuary depicts the cross of Christ in white, representing purity and innocence. It stands out against the darkness of purple, ash gray, and other somber colors reflecting pain, suffering, mourning, and penance. The two black crosses of the thieves crucified with Jesus are obscured by sin and pierced by the background. There is darkness above and below, but a shimmer of hope around the cross, found in the healing blood of Christ, shed for the redemption of the world.

Joshua Starnes, *Director of Music Ministry*



## Children's Ministry

Hey parents! All Pre-K (3&4 year olds), K-3rd and Club45ers will be singing on Palm Sunday (April 2) during worship!



## Celebrating Baptism

In February we celebrated the baptism of Luke Walker, son of *Meredith and Jason Walker and brother of Gabriel.*







**DATES:**  
**JULY 2ND - 7TH**

**THEME:**  
**YOU ARE OUT OF THIS WORLD!**

## WHAT IS CAMP DISCOVERY?

Camp Discovery was established in 2003 as an experience for rising 4th and 5th graders throughout the Rowan-Salisbury School System who may not otherwise have the opportunity to go to summer camp. We love putting on camp for a week at Mt. Shepherd Retreat Center in Asheboro. Together with their individual mentors, campers go on hikes, learn martial arts, play in a pond, make arts and crafts, and worship the Lord. Throughout the week, campers and mentors remind each other of God's promise in Philippians 4:13- "I can do all things through Christ who strengthens me." We are so thankful for mentors and volunteers who make Camp Discovery possible for such wonderful and deserving kids.

## A WEEK AT CAMP LOOKS LIKE ...

- swimming in a lake for the first time
- singing camp songs
- overcoming challenges at the climbing wall
- working as a team through the ropes course
- learning stories of faith during morning devotions
- meeting new friends
- meals around the table & stories around the fire
- learning new skills
- building relationships with mentors
- hearing that God is with you & you are loved!**



# WAYS TO SERVE

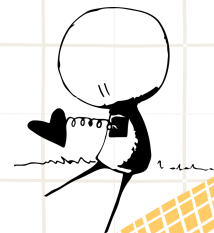


## SPONSOR A MENTOR OR CAMPER

Did you know? The cost to send to send a camper or mentor to camp is \$300.00.

## BE A MENTOR!

Camp Discovery 2023 is July 2nd - 7th



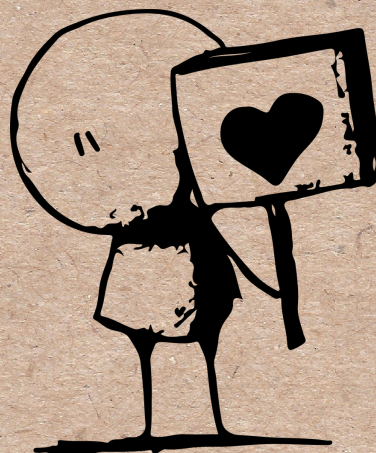
## VOLUNTEER:

Drive the bus to and from Mt. Shepherd

Serve Snack!

Help lead fishing or a craft

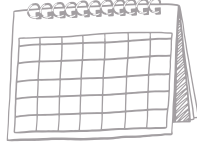
“ Pray for our campers, mentors and leaders. ”





# Youth Ministry

## Salisbury Youth 6-12 GRADE MINISTRY



YOUTH GROUP CALENDAR  
**SPRING 2022**

Newsletter



### MARCH

#### 5 - YOUTH GROUP

12 - no youth group  
(spring break)

#### 19 - YOUTH GROUP

#### 26 - YOUTH GROUP

### APRIL

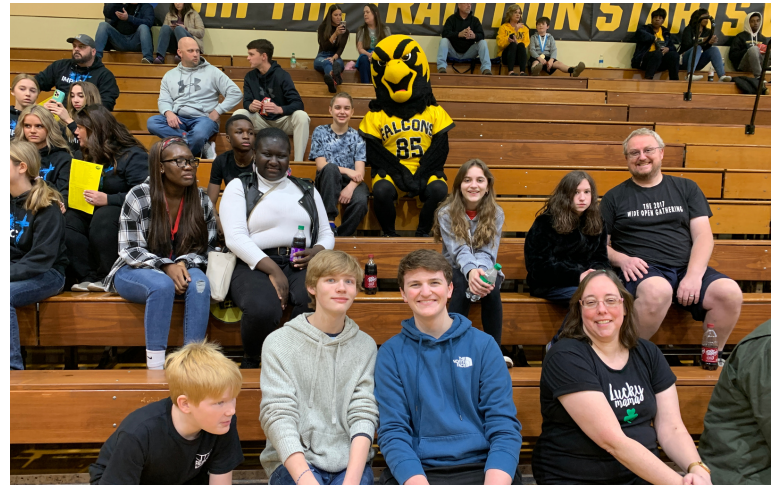
#### 2 - YOUTH GROUP

9- no youth group  
(Easter day)

#### 16 - YOUTH GROUP

#### 23 - YOUTH GROUP

#### 30 - YOUTH GROUP



## Church Scholarship Deadline

March 24, 2023

High School seniors eligible for the Roy & Lula Goodman Scholarship should have received a letter from the Scholarship Committee in February. Applications are due to the church office by 5:00pm on Friday, March 24. more information available on the church website.





## Lent Begins @ FUMC



The Shrove Tuesday Pancake Dinner and Ash Wednesday service officially began the season of Lent. Thank you to Steve Sherriff, Ronnie Rinehart, and Jim Wind who prepared all the food for Shrove Tuesday!



**Our Shrove Tuesday pancake dinner fundraiser raised \$850 for the Mission (road)Trip & summer ministry!**



## Mission (road)Trip: June 5-10

You're invited to join in on this intergenerational road trip that's one part service, and one part education. We'll be spending some time in northern Virginia, then making our way into Washington DC. The goal is to find out more about what God is doing, and discovering more about our responsibility to love God and love our neighbors. More information, and the team application is available on the church website - [fumcsalisbury.org/missiontrip](http://fumcsalisbury.org/missiontrip). This trip is open to youth and adults!





## Scouting Update



In the month of February our Pack was taught its "Duty to God" requirement by Jen. Our Troop camped out in makeshift survival shelters and ran an orienteering course. Both the Pack and the Troop participated in Scout Sunday services and collected 560 pounds of donated food for the Scouting for Food Drive. Nate Shaffer and Austin Hedrick were awarded their Eagle Rank awards on Scout Sunday. Next month we finish our navigation merit badges with a Geocaching trip to the Birkhead Wilderness.



## After School Child Care

Greetings from the staff and students of the After School Child Care! Our students continue to work hard and make great progress. We continue to focus on academic skills, physical activity, devotions and social skills. This month we are focusing on the season of Lent, leading up to Easter.

We are excited to begin our chapel time weekly with Mrs. Bailee and Mr. Josh. We have had 2 sessions so far and look forward to our time together on Thursdays. They have a scriptural focus and music time with the students each time.

We will have our Summer Day Camp Information in the coming weeks. If you know of someone wanting full day care for several weeks of the summer, please share that information will be available in paper copies will be available as well as an electronic version on our website.

Thank you again for all of your support! *Scotty Adcock, Director, ASCC & SDC*





# EGG MY YARD FUNDRAISER

**All orders  
must be received  
by March 26th.**

**24 EGGS/ \$30.00  
48 EGGS/ \$55.00**

**All funds raised will benefit  
Camp Discovery!**

## **HERE'S HOW IT WORKS!**

- Purchase your eggs and fill out all necessary information requested upon payment.
- Bailee, Jenni & Youth will hide them in your yard the evening before, along with a note from the Easter Bunny.
- Easter Morning, all the work is done for you! Wake-up, make your coffee and sit back and enjoy the hunt! (Delivery times available: Friday OR Saturday)



**If you have any questions, please email:  
Bailee at [bailee@fumcsalisbury.org](mailto:bailee@fumcsalisbury.org)**



# Community Meal

## ***COMMUNITY MEALS RETURN!***

Our free fellowship meal for church members and the wider community to gather will be back on the first Wednesday of April. We hope you'll join us, and invite a friend!

**WEDNESDAY APRIL 5**

**6:00PM**



## **Senior Joy**

### **Senior Joy,**

our new ministry for caregivers and those who receive their care, meets Thursdays from 1:00pm – 3:00pm in the United Women of Faith Conference Room (B110).

Please contact Barbara Senter-Cordts at [barbarasenter@gmail.com](mailto:barbarasenter@gmail.com) for more information.





## Easter Flowers

Purchase a hydrangea plant to decorate the sanctuary on Easter Day!  
Plants can be taken home after the 8:30 or 11:00 services that day.



# *Easter Hydrangea* **FUNDRAISER** **\$30 PER PLANT**

**Order Deadline: March 26th**  
**Order forms available Online,**  
**in the Narthex, and Carter Lobby.**



**Do you have an article  
for the Ecclesia?**

Send them to [Jenni@fumcsalisbury.org](mailto:Jenni@fumcsalisbury.org)  
with "(Month to be printed) Ecclesia" in  
the subject line.

Articles can be submitted by the first  
Friday of the month prior to when you  
would like it printed.

**Access the Church  
Calendar Any Time**

Access the church calendar  
any time! Just go to  
[fumcsalisbury.org](http://fumcsalisbury.org) and look  
under the Connect tab. There  
you can also find a digital  
version of the Ecclesia.



# Church History

*"looking back... moving forward"*

Shortly before he died, Jesus prayed that his followers would be one even as he and his heavenly father were one (John 17:11). That proved difficult for a deeply divided church. His first century followers came from diverse backgrounds. Early Christian converts included Jews, Samaritans, Ethiopians, Roman soldiers, and even a persecutor named Saul. They did not always agree.

The first recorded church fight involved Greek and Aramaic speaking widows. Each felt the other group received more than their fair share of the food distribution. Church leaders resolved that issue and many other disagreements that followed. Slowly, Christians united and called the new church Catholic. The word catholic literally means "universal."

In 1054, internal divisions led to the first major church division. The Orthodox Church continued in the eastern part of the old Roman Empire while the Catholic church prevailed in the west. Five hundred years later, another split divided Roman Catholics and Protestants. Methodists trace our lineage through the Roman Catholic Church and the Protestant Church of England.

Diversity also dominates Protestantism. Some churches practice a congregational form of government where each local church is independent. Church members have total control over all legal and doctrinal decisions. That is not our tradition as Methodists. United Methodists inherited an episcopal government with bishops and organic unity. Our structure embodies the connexionalism of our predecessor denominations. We affirm that Christians are stronger when they work and serve together.

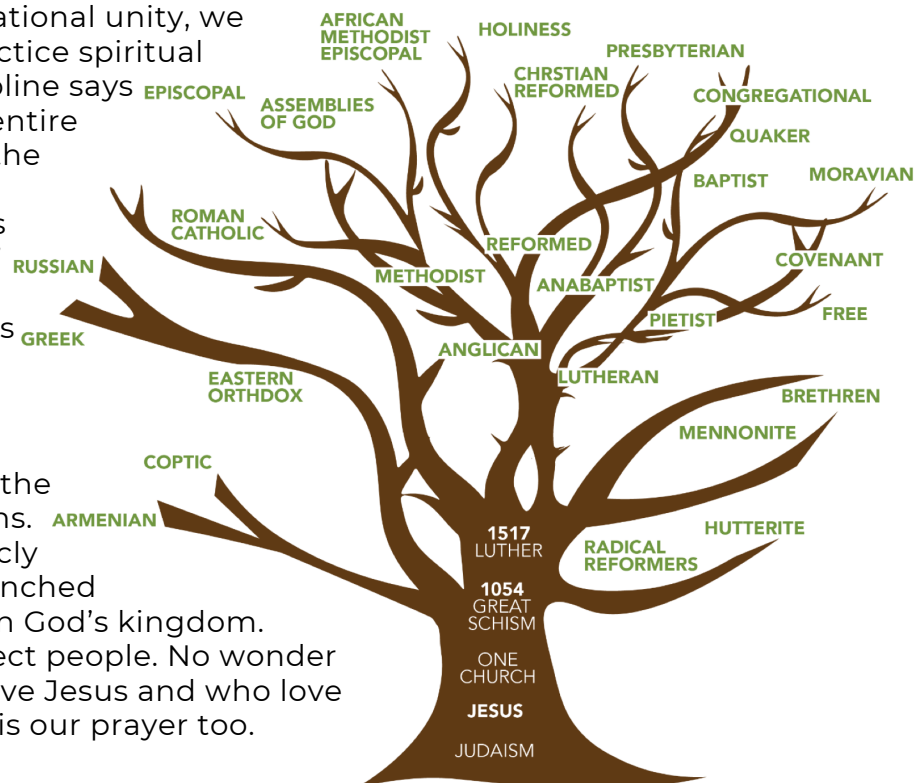
When someone joins a local United Methodist Church, they become a member of the world-wide United Methodist Church. Every church and church member belongs to that larger whole. Historically, this united government has been fluid and adaptable. A quadrennial General Conference of democratically elected lay and clergy delegates reviews and updates the legislation that unite us. General Conference decisions are published in The Book of Discipline.

Two key words appear throughout The Book of Discipline. They are "shall" and "may." If a paragraph uses the word "shall," then it is something every congregation is expected to do. If it uses the word "may," then the directive is optional. The wide use of "may" paragraphs allows local flexibility.

United Methodists not only have denominational unity, we also embrace an ecumenical spirit. We practice spiritual unity with all Christians. The Book of Discipline says that while each local church is part of the entire United Methodist Church, it is also part of the church universal. "The universal church is composed of all who accept Jesus Christ as Lord and Savior, and which in the Apostles' Creed we declare to be the holy catholic church (BOD ¶1203)." The Discipline permits congregations to create federated, union, merged, and yoked parishes with other denominations (BOD ¶1208).

Church unity has never been easy. Among the original twelve disciples there were divisions. One disciple betrayed Jesus, another publicly denied knowing him, and two disciples launched a political campaign to get the best seats in God's kingdom. Every local church is still filled with imperfect people. No wonder Jesus prayed for unity. Yet for those who love Jesus and who love one another, the prayer for Christian unity is our prayer too.

Fred Jordan, *Church Historian*





# MEMBERSHIP VOWS

of The United Methodist Church

To renounce the spiritual forces of wickedness, reject the evil powers of the world, and repent of their sin;

To accept the freedom and power God gives them to resist evil, injustice, and oppression;

To confess Jesus Christ as Savior, put their whole trust in his grace, and promise to serve him as their Lord;

To remain faithful members of Christ's holy church and serve as Christ's representatives in the world;

To be loyal to Christ through The United Methodist Church and do all in their power to strengthen its ministries;

To faithfully participate in its ministries by their prayers, their presence, their gifts, their service, and their witness;

To receive and profess the Christian faith as contained in the Scriptures of the Old and New Testaments.

**#BeUMC**



# HAPPY BIRTHDAY!

1 Reid Leonard  
Nancy Rudd

2 David Austin  
Joseph Clark

3 Jill Duggan  
Bob Johnsen

4 Walter Maxwell

5 Mark Beymer  
Kelly Fisher

6 Casey Gouge

7 Will Douglas

8 Sarah Hensley  
Kerry Kribbs  
Jeff Lineberry  
Katherine Miller

9 Linda Bowman  
Don Carter  
Shelley Cross  
John Ellis II

10 Jarrett Bradshaw  
Rohan Joseph

11

12 Taffy Jordan

13 Julia Baker  
Ed Lutz

14 Nettie Noble

15 JoAnn Smith  
Susan Whitaker

16 Andy Lineberger

17 Norman Clark  
Gary Price  
Camille Robinson  
Jamie Webb

18 Van Kelly

19 Robbie Ladd  
Jessica Watson

20 Linda Brown

21 Nancy Haines  
Dudley Johnsen

22 Jim Gilland  
Martha Miller

23

24 Alex Grenoble  
Carolyn Peck

25 Lacey Mastro  
Billie Moore  
Shulley Storey

26 Arabelle Hutton  
Charleigh Weisensel

27 Brooke Busby  
Glenn Moore  
Allison Robinson

28 Midjii Bost  
Howard Douglas  
Kay McCartney  
Boyd Watts

29 Holland Bradshaw  
Adrienne Howe

30 Barbara Senter

31 Kate Goodman

March







# ECCLÉSIA

NEWSLETTER OF FIRST UNITED METHODIST CHURCH



*making and nurturing Christian disciples  
through the presence and power of God*

217 SOUTH CHURCH STREET SALISBURY, NC 28144 | [FUMCSALISBURY.ORG](http://FUMCSALISBURY.ORG) | 704.636.3121